
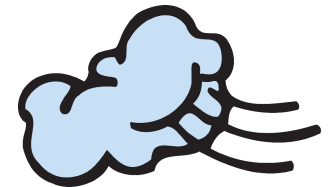


Sunday	Mon	Tuesday	Wednesday	Thursday	Friday	Saturday
 <p><b>6 FOOD SHELF SUNDAY</b></p> <div style="border: 1px solid black; padding: 5px;"> <p>9:00am Contemporary 10:00am Fellowship Hour 10:30am Sunday School 10:30am Traditional</p> </div> <p><b>13 "Go the Extra Mile" for FOOD SHELF</b></p> <div style="border: 1px solid black; padding: 5px;"> <p>9:00am Contemporary with Sacrament of Baptism for Kylie Jordan Lowe 10:00am Fellowship Hour 10:30am Sunday School</p> </div> <p><b>20</b></p> <div style="border: 1px solid black; padding: 5px;"> <p>9:00am Contemporary 10:00am Fellowship Hour 10:30am Sunday School 10:30am Traditional</p> </div> <p><b>27</b></p> <div style="border: 1px solid black; padding: 5px;"> <p>9:00am Contemporary 10:00am Fellowship Hour 10:30am Sunday School - Service Project 10:30am Traditional</p> </div> <p>2:30pm Worship @ Havenwood 3:00pm BSU Choir Spring Tour Concert</p>	<p><b>7</b></p> <p>5:00pm <i>Weight Watchers</i></p> <p><b>14</b></p> <p>5:00pm <i>Weight Watchers</i></p> <p><b>21</b></p> <p>5:00pm <i>Weight Watchers</i></p> <p><b>28</b></p> <p>5:00pm <i>Weight Watchers</i></p>	<p><b>1</b></p> <p>9:30am Pastors H. Conference</p> <p>5:30pm Finance Meeting</p> <p>7:00pm Worship &amp; Music Committee Meeting</p> <p><b>8</b></p> <p>10:30am Text Study</p> <p>5:00pm Church in Society Committee Mtg.</p> <p>6:30pm Council Meeting</p> <p><b>15</b></p> <p>10:30am Text Study</p> <p>1:30pm Mary Martha Circle</p> <p><b>22</b></p> <p>10:30am Text Study</p> <div style="background-color: green; color: white; text-align: center; padding: 10px; width: fit-content; margin: 10px auto;"> <b>BEACON DEADLINE</b> </div> <p><b>29</b></p> <p>10:30am Text Study</p>	<p><b>2</b></p> <p>7:00am Men's Group 10:30am Bible Study 12:00 noon Staff Meeting 5:30pm Christian Ed / Youth Meeting 5:30pm Supper <i>[Children/Confirmation/Youth/Parents]</i> 5:30pm KIDS CLUB 5:30-8:00pm Confirmation Group High School Group</p> <p><b>9</b></p> <p>7:00am Men's Group 9:30am Staff Meeting 10:30am Bible Study <b>12:00 noon Ash Wednesday Service -</b> <u>\ Soup afterwards</u> <b>6:30pm Ash Wednesday Service</b></p> <p><b>16</b></p> <p>7:00am Men's Group 9:30am Staff Meeting 10:30am Bible Study 12:00 noon Lenten Service/ soup after 4:30pm 5<sup>th</sup> Grade 1<sup>st</sup> Communion Class 5:30pm Supper <i>[Children/Confirmation/Youth/Parents]</i> 5:30-7:00pm KIDS CLUB 5:30-8:00pm Confirmation Group High School Group</p> <p><b>23</b></p> <p>7:00am Men's Group 9:30am Staff Meeting 10:30am Bible Study 12:00 noon Lenten Service/ soup after 4:30pm 5<sup>th</sup> Grade 1<sup>st</sup> Communion Class 5:30pm Supper <i>[Children/Confirmation/Youth/Parents]</i> 5:30-7:00pm KIDS CLUB 5:30-8:00pm Confirmation Group High School Group</p> <p><b>30</b></p> <p>7:00am Men's Group 9:30am Staff Meeting 10:30am Bible Study 12:00 noon Lenten Service/ soup after 5:30pm <b>NO</b> Supper 5:30pm <b>NO</b> KIDS CLUB 6:30 <b>NO</b> High School Youth Group 6:30pm Confirmation - Guide Meeting - Students with their family</p>	<p><b>3</b></p> <p>9:00 Bethel Quilters</p> <p>4:30pm <i>Weight Watchers</i> 6:00pm Staff Support Meeting 6:00pm <i>Bells &amp; Chimes</i></p> <p><b>10</b></p> <p>9:00 Bethel Quilters</p> <p>4:30pm Weight Watchers</p> <p>6:00pm Bells &amp; Chimes</p> <p><b>17</b></p> <p>9:00 Bethel Quilters</p> <p>4:30pm <i>Weight Watchers</i></p> <p>6:00pm <i>Bells &amp; Chimes</i></p> <p><b>24</b></p> <p>9:00 Bethel Quilters</p> <p>4:30pm <i>Weight Watchers</i></p> <p>6:00pm <i>Bells &amp; Chimes</i></p> <p><b>31</b></p> <p>9:00 Bethel Quilters</p> <p>4:30pm <i>Weight Watchers</i></p> <p>6:00pm <i>Bells &amp; Chimes</i></p>	<p><b>4</b></p> <p>1:30pm World Day of Prayer @ St. Philip's Catholic Church</p> <p><b>11</b></p> <p><b>18</b></p> <p><b>25</b></p>	<p><b>5</b></p> <p><b>12</b></p> <p><b>19</b></p> <p><b>26</b></p>



**2011**