



BETHEL BEACON

BETHEL LUTHERAN CHURCH

5232 Irvine Avenue NW

Bemidji, MN 56601

218-444-4746

Fax 218-444-4789
bethelbemidji.org

Rev. Mark Kindem
Pastor

Home Phone # 444-8545
pmkindem@hotmail.com

Patti VanCamp
Office Admin./Fin. Manager
adminsec@bethelbemidji.org

LaVon Johnson
Secretary/Receptionist
lavon.johnson@yahoo.com

Abe Hanson
Custodian

Prayer Chain
Day

Bob & Vi Swanson @ 444-3745

Evening

Judy Thorson @ 444-6944



“Let me tell you what I don’t like about Jesus. He calls me to follow; I like to run around. He lets me see a single step, and sometimes even less than that; I like to know the end. I choose to travel by sunlight or headlight; he gives me only starlight. I like to set the pace; he asks me to hurry, or worse, sometimes to wait. He embarrasses me and gets me into trouble; he sometimes makes a scene. And just when I feel strong he calls me to a cross; I want a crown.”

“What I don’t like about Jesus” Gerhard Frost

After the Christmas season then what? It’s called Epiphany: to make known or reveal. We learn more and more about Jesus. We see the Wise men follow the star to find Jesus; he teaches as a twelve year old in the temple; He is Baptized and affirmed by God as his chosen servant; he invites the skeptics to ‘Come and see’ the truth about himself in words and signs; Finally, in the transfiguration, the disciples are given the true identity of their teacher and leader; He is God’s beloved Son!

As God’s son we discover that there is more to Jesus than meets the eye. He calls us to give our best for him, ourselves! To carry our cross in his service. The way is often narrow and lonesome. But the hand that holds ours is faithful to the end. Thanks be to God.

“If you try to hang on to your life, you will lose it. But if you give up your life for my sake and for the sake of the Good News, you will save it.” New living translation
Mark 8:35

Pastor Mark Kindem

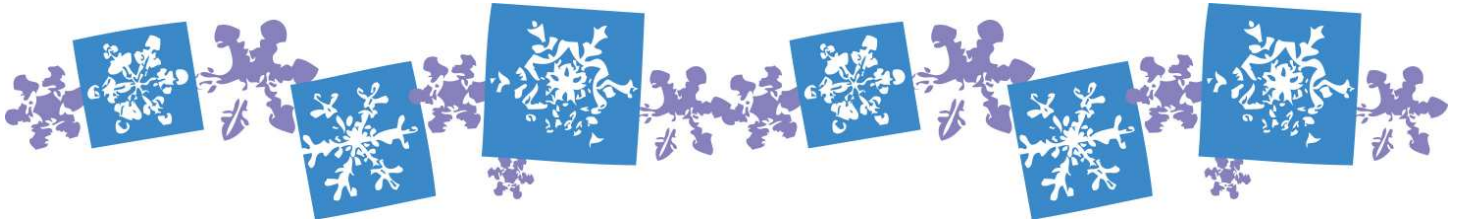
SUNDAY WORSHIP

9:00 AM
Contemporary Service

10:00 AM
Fellowship Hour

10:30 AM
Traditional Service





From the Council President

how to manage it; and Wholeness and how to maintain it. He points out that when congregations struggle ineffectively with one or more of these issues, the congregation's health is at risk. As I look back on the year, I feel we have spent much energy attempting to manage anxiety and maintain wholeness. We have put mission on the back burner and our concern with strengths and resources has focused on lacks rather than adequacy for our mission. I know these issues have taken my attention and energy. My hope for the coming year is that our eyes can turn outward to the

mission field around us. Not just to those already in churches they may not be completely satisfied with, but to those who have not heard or have forgotten the message of Christ they heard in their childhood. I am thankful for all of you that have worked so hard this year; for the council and committees, for the music and worship crews, for those that help with outreach through the food shelf, meals on wheels, habitat for humanity, and soup kitchen, for those who brought the bazaar to fruition, for those that teach, study, and pray for those who worship and give. Let's all paint our toenails in preparation for 2012 so that our feet will be beautiful as we preach the good news!

Together in Christ's service,
Laurie Buehler, Council Chair

*Everyone who calls on the name of the Lord shall be saved." But how are they to call on one in whom they have not believed? And how are they to believe in one of whom they have never heard? And how are they to hear without someone to proclaim him? And how are they to proclaim him unless they are sent? As it is written, **How beautiful are the feet of those who bring good news!**"*

Romans 10:13-15

As a council we have been reading **HEALTHY CONGREGATIONS** by Peter Steinke. In our next chapter, Steinke outlines the four core issues of every congregation. They are: Mission and how to achieve it; Strengths and Resources and how to implement them; Anxiety and



**To everyone who donated their
time and talents in helping out
in the office this past year!
We appreciate each of you!**

The annual Stuff-A-Truck drive brought in over 16,000# of food, and \$4,000 in cash donations. The truck delivery and unloading and storage of the food went very well. Thank you to all the donors and volunteers for their efforts that day! The Food Shelf finds itself in need of more space to store and deliver food stuffs to our clients because of the increase in the number of citizens served in our county. The BCFS president, board members, and coordinator have been looking for a way to dedicate monetary donations to the search for a new food shelf site. They have developed a program called "HELPING HANDS" Program. All donations to this fund will be used to find and hopefully secure a

Bemidji Community FOOD SHELF



building which will better serve the needs of food clients.

Please see informational pamphlets which will be on the table in the entryway of the church.

The month of November 820 families were served. "Hot items" needed this month are juice, macaroni and cheese, and peanut butter. Can openers are always appreciated.

As a reminder, we are still collecting Our Family food labels, and still have a box in the church office for your labels. All labels are taken to the food shelf where the UPC codes are removed. They are then sent and redeemed, along with all those saved by other donors. This year these labels earned \$600.00 for the Food Shelf!!

As always, BCFS is very grateful to the volunteers and all those who help with their support and donations. I wish you all special blessings in the year ahead.

Respectfully,
Janice Beil

December 13, 2011 - Devotions were led by Ray Brown and it was agreed to continue our discussions of the Healthy Congregations book with Chapter 4, "Congregations At Risk" for the January meeting. An effort needs to be made to get copies of the book into the hands of the new council members.

After the approval of the minutes and various reports, the results of the November council elections were presented. Ray Brown, Duane Christensen, Kirt Dreyer & Rick Hoff were elected to 3 year terms; Ed Beil, Laurie Buehler, Nancy Streightiff & Laurie Pommerening were elected to 2 year terms. Dennis Buchholtz & Len Bergstrom for 2 year terms, and Kirt Dreyer for a 1 year term to the Bethel Foundation. The organizational meeting for the new council will be during the January meeting. This will include new committee assignments, considering a congregational assessment, council retreat, annual meeting agenda and final budget plan.

A report on the budget hearings was given and after some discussion the council voted to present budget plan A for 2012 to the congregation at the annual meeting.

The annual meeting was set for January 29th 2012 with some details to be determined at the January Council meeting.

The meeting was adjourned with prayer and a thank you to Margaret McNea for her good and faithful service on the council.

Respectfully submitted by:

Loren Hoyum, Council Vice president

Council Highlights



January Birthdays

- 05 Violet Charon
- 07 Anthony Westrum
- 09 Peter Dreyer
- 13 Peyton Walker
- 14 Loren Hoyum
Pat Moen
- 16 Howard Watts
Seth Dreyer
- 17 Gayle Quistgard
Jim Bronczyk
- 24 Brooke Pommerening
Sue Sandell
- 27 Elaine Christensen
Evan Copiskey



- 01 Darrel & Lillian Lauderbaugh 1942
- 02 Loren & Edith Hoyum 1965
- 22 Mike & Cherene Sadek 2008
- 24 Earl & Lee Lundeen 1951



OFFICIAL NOTICE
to the
CONGREGATION!

Sunday, January 29, 2012

11:30 a.m.

Potluck Dinner followed by
Annual Congregational Meeting

Everyone is encouraged to attend!

Sunday School SCHEDULE

Wednesday, January 4 @ 6:30 p.m.

Wednesday, January 11 @ 6:30 p.m.

Wednesday, January 18 @ 6:30 p.m.

Wednesday, January 25 - No Class,

Confirmation Classes **7th - 9th Grade**

Jan. 04	6:30 - 8:00 p.m.	Theme Event
Jan. 11	6:30 - 8:00 p.m.	Servant Event
Jan. 18	6:30 - 8:00 p.m.	Theme Event
Jan. 25	6:30 - 8:00 p.m.	Guide Meeting - Students with family tonight



January 4 @ 6:30 p.m.

Study: Prayer Lab

January 11 @ 6:30 p.m.

Study: Owl Island

January 18 @ 6:30 p.m.

Study: Problems, Prayers & Praises

January 25 @ 6:30 p.m.

Study: Music, the Window to Your Soul

Attention Youth!

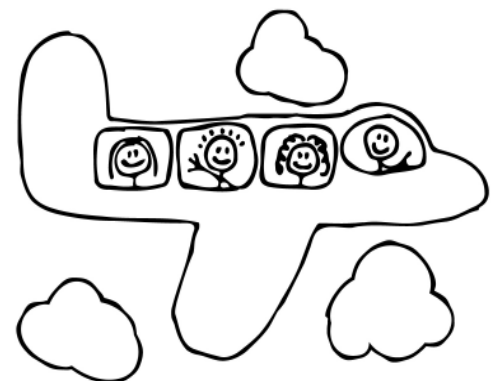
Stop by the church office and pick up the "The PATHWAYS LUTHERAN OUTDOOR MINISTRIES Summer of 2012 Programs" catalog to check out the great opportunities Pathways is offering this summer!

Ms. Terri asked her Sunday School class to draw a picture of their favorite Bible stories. She was puzzled by Kyle's picture, which showed four people on an airplane, so she asked him which story it was meant to represent.

"The Flight to Egypt," was his reply.

Pointing to each figure, Ms. Terri said, "That must be Mary, Joseph, and Baby Jesus. But who's the fourth person?"

"Oh, that's Pontius—the Pilot!"



To view our January Calendar go to Bethel Lutheran's home page on the web and in the tab bar double click on MONTHLY CALENDARS. Then double click on JANUARY 2012 down in the left hand corner of the screen. This will open a PDF of the JANUARY calendar for you to view.



Church in Society

Special thanks to all that helped with **SOS** at Bethel. We had 26 volunteers and put in 240 hours of volunteer time. SOS will continue through the month of March. We may have the opportunity to host again and will need more help. Please keep the recipients of this service in your prayers and the host churches and the volunteers needed to make it happen. As always we struggle with the need to provide emergency help for the short term with longer term help securing employment and housing in our community.

Once again, seniors needing food assistance were helped through our service with **Meals on Wheels**. Thank you to the drivers and those delivering the meals. Many in our community depend on you.

Janice Beil is now coordinating our volunteers for the **food shelf**. If you have time the first Wednesday of the month to help, let Jan know. We have a faithful crew but can always use more folks. Thank you all for being there. Thanks Roy for gleaning and making it possible to have additional items available to the clients. Food items are always needed so continue to remember the first Sunday of the month is Food Shelf Sunday.

Habitat For Humanity is hoping to do a Faith Build this summer. As you know, Thrivent for Lutherans partnered with Habitat for four years so Lutherans have been involved with building for at least that long. We are in a good position to provide leadership for a broader based faith community building effort. A meeting will be held January 3, 2012 at 7:30 to get the ball rolling on a project for next summer. If you are interested in being a Bethel contact person for this project, talk to Laurie Buehler or Judy Reese.

How Can You Show Your Love?

Want to do something special for your spouse to show how much you care? Attend a Lutheran Marriage Encounter Weekend and focus on just the two of you. Engaging presentations by both lay and clergy leaders give you tools and information while exercises and conversations with your spouse in the privacy of your hotel room revitalize romance, deepen communication, and nourish the spirituality in your marriage

The Spring Lutheran Marriage Encounter Weekends in Minnesota are February 10-12 (think Valentines!) in Brooklyn Center, March 23-25 in Duluth and May 4-6 in Walker. Please register several weeks in advance. For more information, contact Dick & Judy Dehnel at 952-432-3105, Pete & Phyllis McMahon at 763-561-1575 or visit www.godlovesmarriage.org.

Thanks to everyone who brought in Christmas cards, goodies and well wishes to the staff this year. It was appreciated

and yummy!



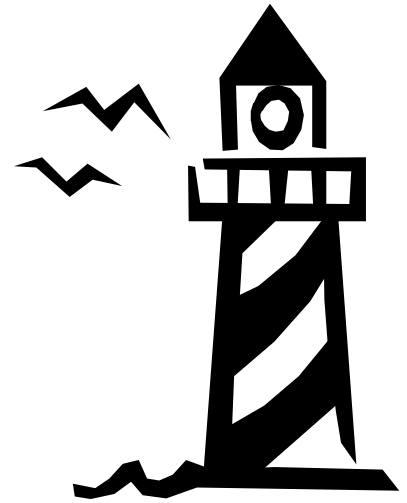
Bethel Lutheran Church
5232 Irvine Avenue NW
Bemidji, MN 56601

Nonprofit Organization
U.S. Postage Paid—Bemidji MN
Permit No. 60

Return Service Requested

BETHEL BEACON

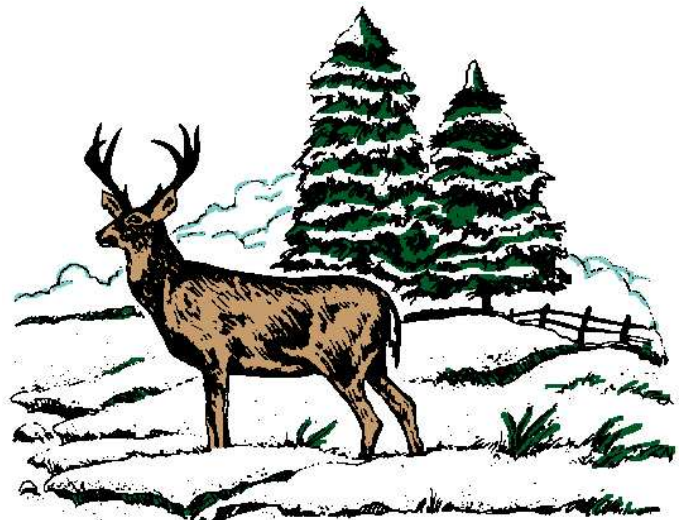
Monthly Publication - Volume # 2012 - Issue # 01



JANUARY 2012

MT. CARMEL BIBLE CAMP

How about taking the family to Bible Camp next summer? Mt. Carmel is located on Lake Carlos north of Alexandria, MN, and is set up for families, couples, or singles of all ages to enjoy a great week of Christian fellowship, bible study, and recreation. Pastor and Mrs. Kindem would like you to join them at camp this summer June 30-July 6, 2012. There are family style cabins, or campsites for your tent or camper. It's a fun week...the kids spend the morning in the youth programs, so the adults are free to listen to the morning bible study leaders. Then of course there's plenty of lake time and relaxing fun. If you are interested in going, please contact Miriam Kindem A.S.A.P. The camp fills up fast, so we want to make sure to get you in. Brochures and more information will be following.



JANUARY